

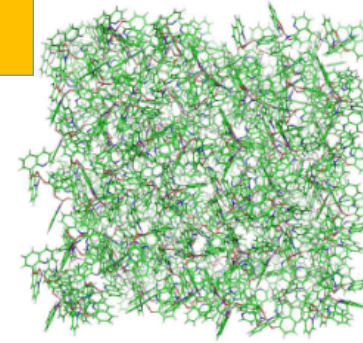
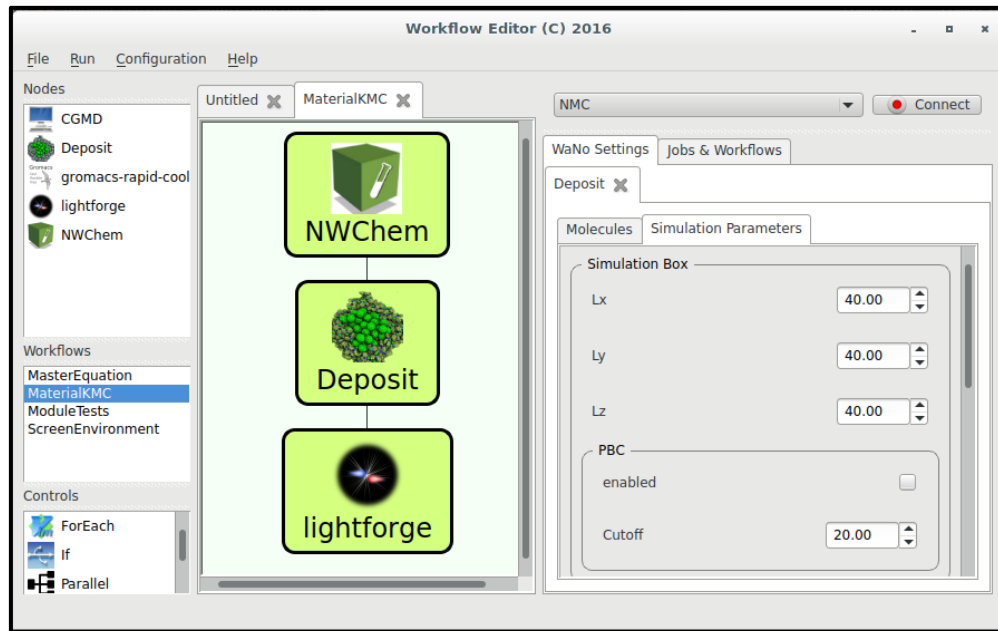
Using novel organic semiconductor materials? EXTMOS multiscale simulation flow predicts vital parameters for device and circuit design



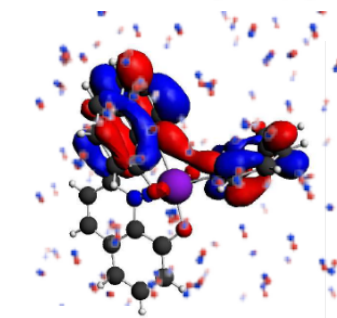
EXTENDED Model
of Organic
Semiconductors



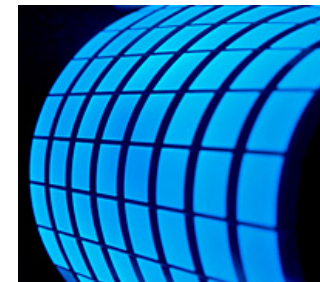
Workflow Engineering



Molecular
Structure



Electronic
Properties



Charge &
Exciton Transport

TCAD

SPICE

<http://extmos.eu>

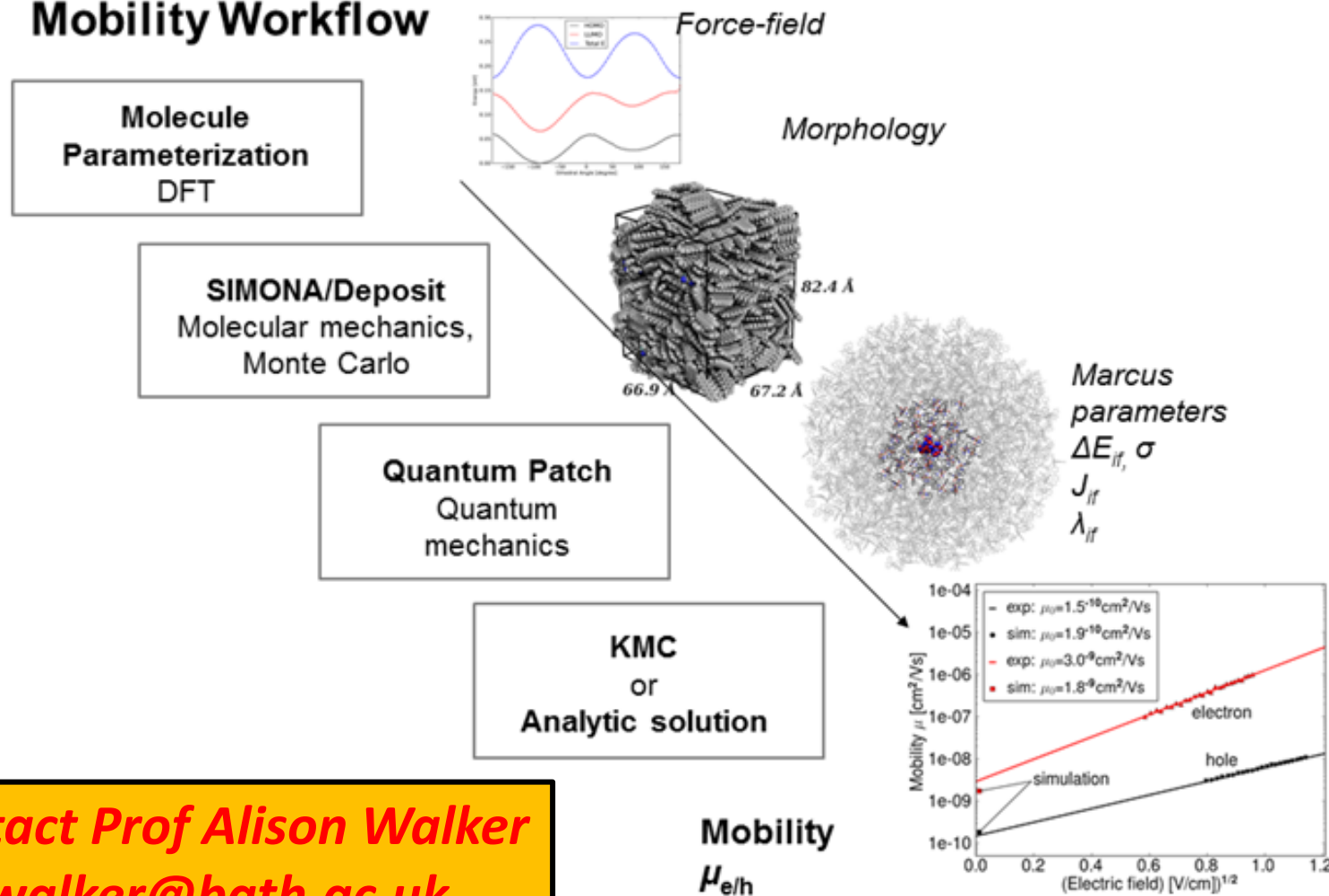
If interested, EXTMOS would like to support your Design activities!



EXTended Model
of Organic
Semiconductors



Mobility Workflow



Contact Prof Alison Walker
a.b.walker@bath.ac.uk

Partners:

- Bath University
- Mons University
- Bologna University
- IMEC
- Karlsruher Institute (KIT)
- CEA Grenoble
- CNRS Grenoble
- Max Plank (MPG)
- NOVALED
- Nanomatch
- Silvaco
- FlexEnable

<http://extmos.eu>