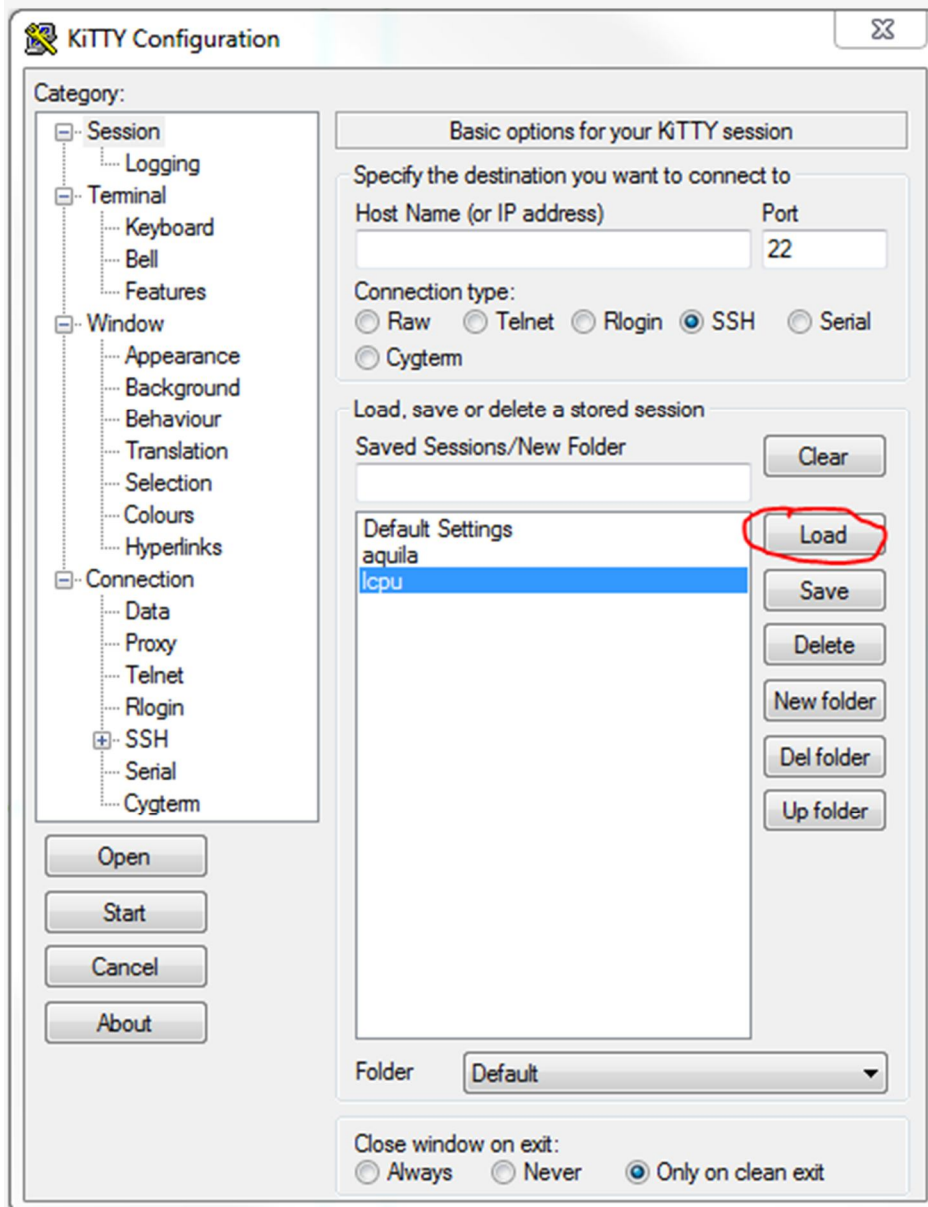


Connecting with a terminal and the ability to load a window

Programs needed: KiTTY (or PuTTY) and Xming

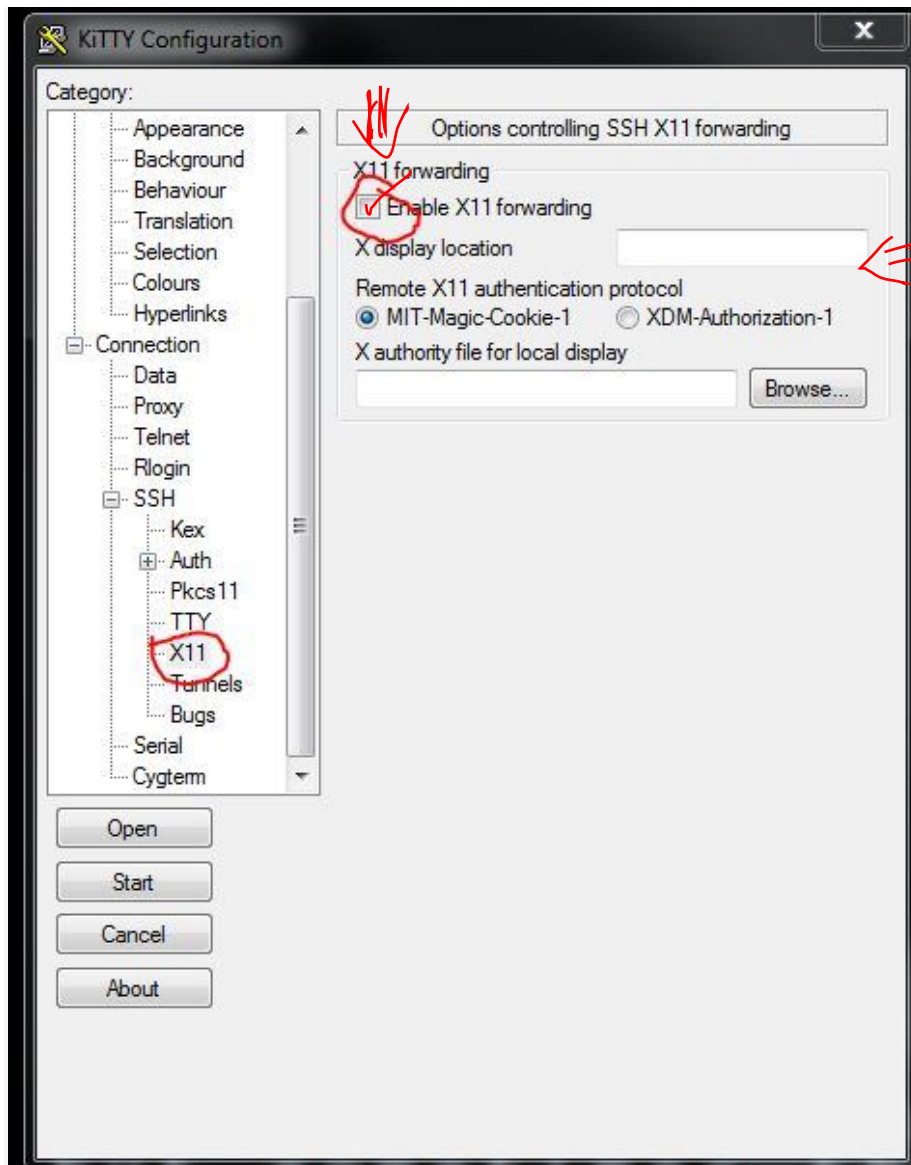
Load up Xming, it won't say anything and will just open, you should be able to see a black X in the taskbar. If you try and open it again it will tell you a fatal error has occurred. Once Xming is open you'll need to enable X11 forwarding in your SSH client. From the options on the left select Connection - SSH - X11 and then tick the 'Enable X11 forwarding' box

First of all, in the configuration of Kitty - Session we can see all the sessions created by default. In order to change the X11 Forwarding parameter we can select the session we want to modify, for example "lcpu" and then click on "Load".



Then we can modify the parameter within the option SSH - X11 to Enable X11 Forwarding and make sure that the text box below called "X display location" is empty and then we should **go back to the option "Session" to click on Save**. Same process for the session "aquila".

Tick this box



You'll now get a terminal but when you run a program that would display a window it will appear as a window on your desktop.