

Go to Thermal Program

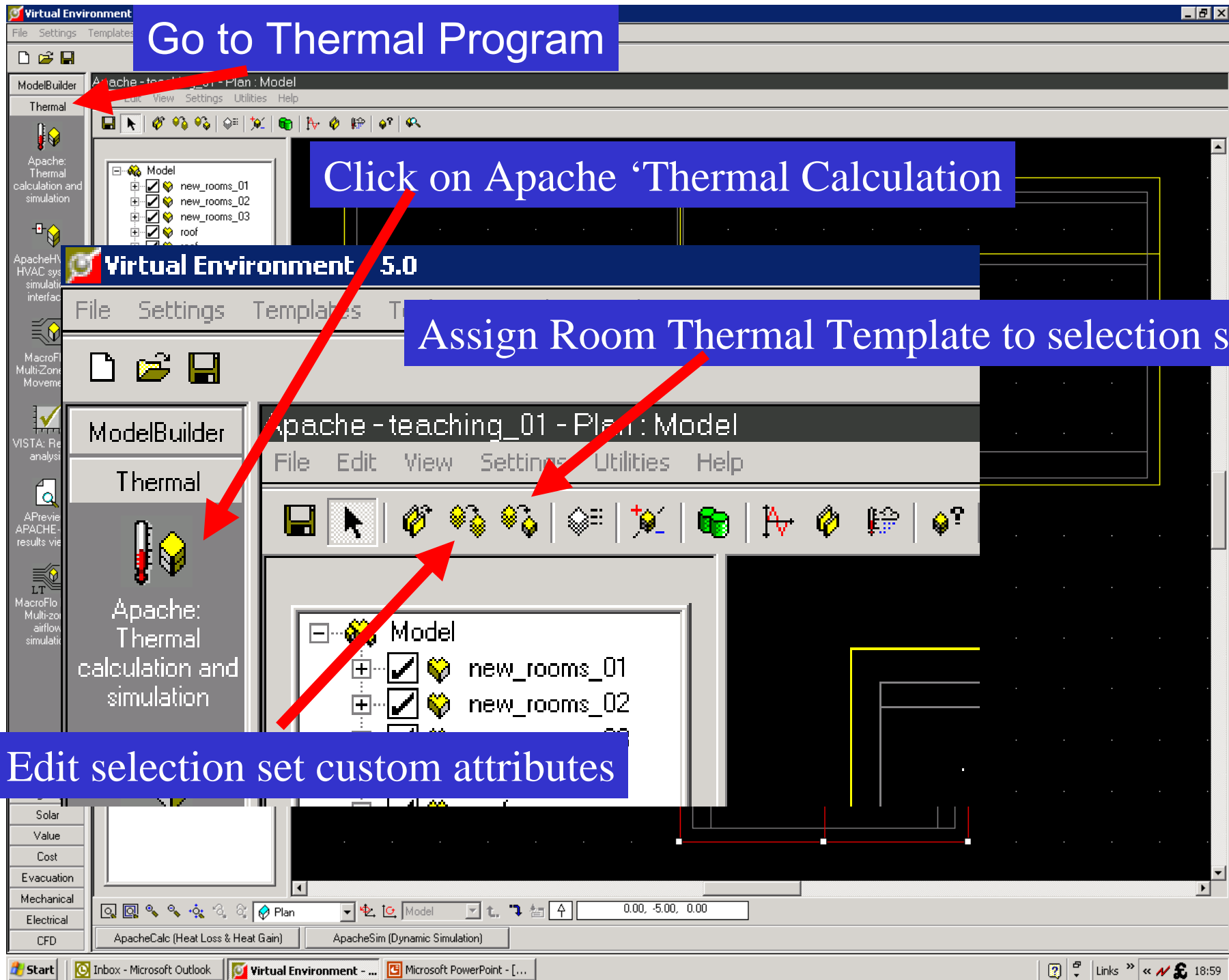
The screenshot displays the 'Virtual Environment' software interface. At the top, a blue banner contains the text 'Go to Thermal Program'. The main window is titled 'Apache - teaching_01 - Plan : Model' and features a menu bar with 'File', 'Edit', 'View', 'Settings', 'Utilities', and 'Help'. A toolbar with various icons is located below the menu bar. On the left side, a 'ModelBuilder' sidebar lists several modules: 'Thermal' (with a sub-entry 'Apache: Thermal calculation and simulation'), 'ApacheHVAC: HVAC system simulation interface', 'MacroFlo: Multi-Zone Air Movement', 'VISTA: Results analysis', 'APreview: APACHE -calc results viewer', and 'MacroFlo Lite: Multi-zone airflow simulation'. Below these are buttons for 'Lighting', 'Solar', 'Value', 'Cost', 'Evacuation', 'Mechanical', 'Electrical', and 'CFD'. The central workspace shows a plan view of a building model with a gabled roof structure. The roof is outlined in red, and the interior rooms are outlined in yellow. A 'Model' tree on the left lists 'new_rooms_01', 'new_rooms_02', 'new_rooms_03', and two 'roof' entries. At the bottom of the workspace, there are buttons for 'ApacheCalc (Heat Loss & Heat Gain)' and 'ApacheSim (Dynamic Simulation)'. The status bar at the very bottom shows the Windows taskbar with 'Start', 'Inbox - Microsoft Outlook', 'Virtual Environment - ...', and 'Microsoft PowerPoint - [...]' open, along with a system tray showing 'Links', a network icon, and the time '18:59'.

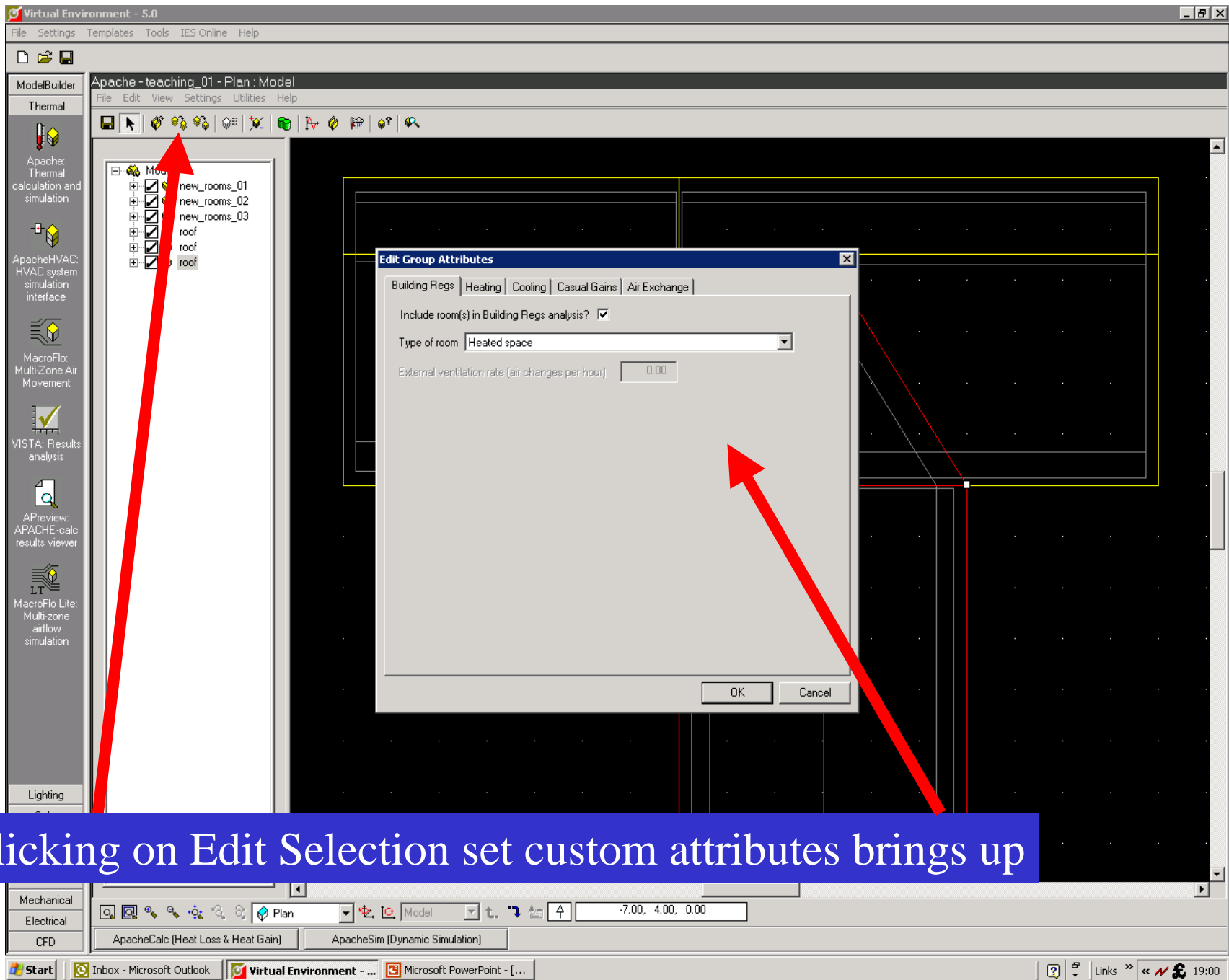
Go to Thermal Program

Click on Apache 'Thermal Calculation'

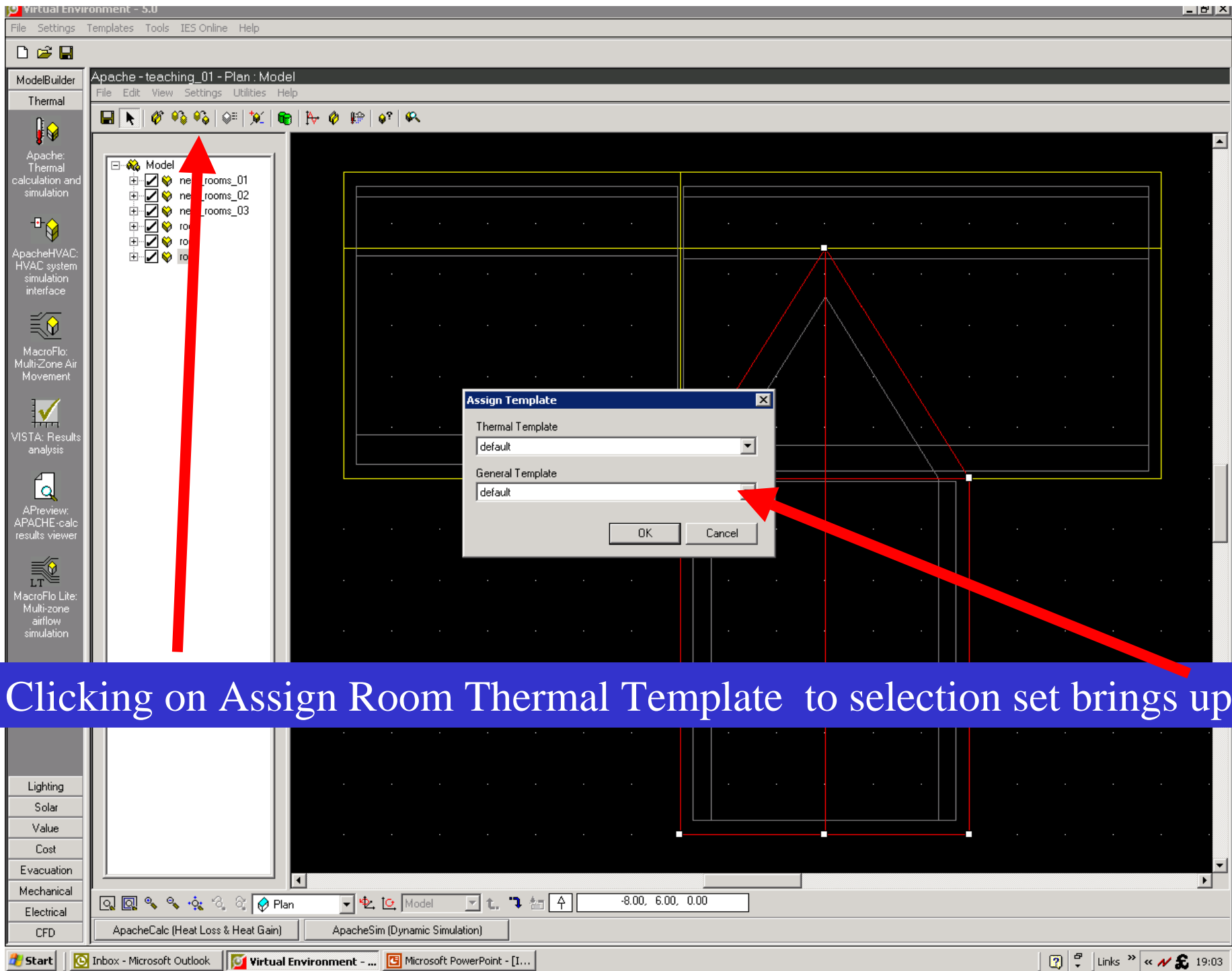
Assign Room Thermal Template to selection set

Edit selection set custom attributes





Clicking on Edit Selection set custom attributes brings up



Clicking on Assign Room Thermal Template to selection set brings up