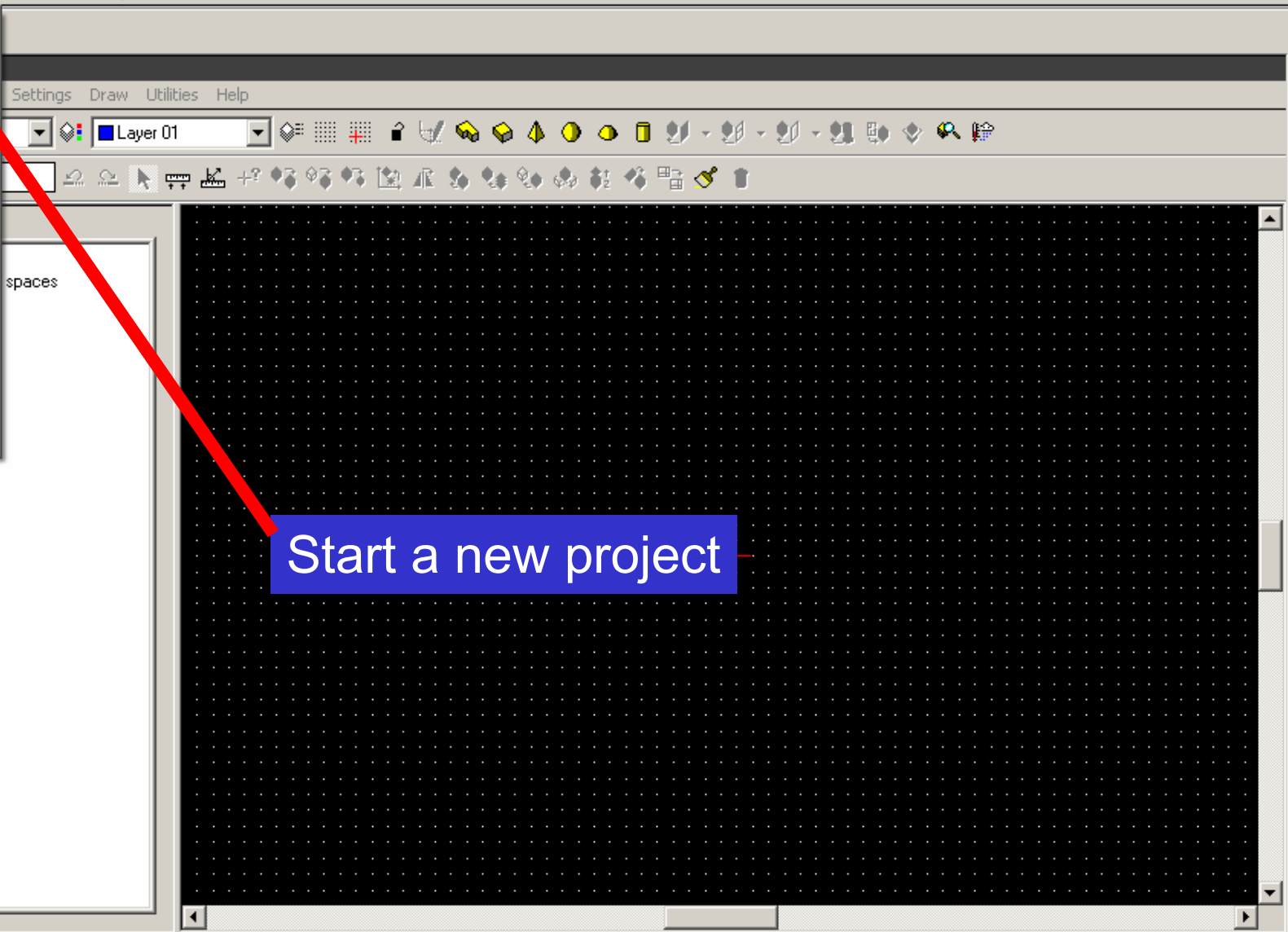


- New Project...
- Open Project...
- Save Project
- Save Project As...
- Archive
- Print...
- 1 serious_01
- 2 C:\ANY\...\Model_01
- 3 C:\ANY\...\Template_01
- 4 C:\IES\...\teaching_02
- 5 C:\IES\...\teaching_01
- 6 C:\IES\...\My_first_model
- 7 C:\IES\...\repro\repro
- 8 C:\IES\MODEL001\der\der
- Exit

Settings Draw Utilities Help

Layer 01



A large 3D workspace with a black grid floor. A red arrow points from the 'New Project...' menu item to the center of the workspace. A blue text box with white text 'Start a new project' is positioned over the arrow.

- Thermal
- Lighting
- Solar
- Value
- Cost
- Evacuation
- Mechanical
- Electrical
- CFD

Plan Model -16.50, -4.50, 0.00

	Room Name	Room ID	Volume (m³)	Floor Area (m²)	Colour	Layer
♥						



ModelBuilder



ModellT: Building modeller



CompLib: Component modeller

- Thermal
- Lighting
- Solar
- Value
- Cost
- Evacuation
- Mechanical
- Electrical
- CFD

Untitled

File Edit View Settings Draw Utilities Help

Colour 01 Layer 01

Model

- No spaces

New Project

Project Templates

Project name:

Location:

... (ellipsis button)

Create

Close

Browse for Folder

Select project folder.

- homes on 'rumba' (H:)
 - 6e-cadlab
 - apache
 - dos
 - Lodge
 - mail
 - private_html
 - Profiles_Do_Not_Delete
 - ProjectM2**
 - public_html
 - quarto
 - sun
 - suntest

OK Cancel

Click on ellipsis to Browse

Plan Model -16.50

Room Name	Room ID	Volume (m³)	Floor



ModelBuilder

ModellT:
Building
modeller

CompLib:
Component
modeller

Untitled

Colour 01 Layer 01

Model

- No spaces

New Project

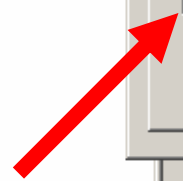
Project Templates

Project name:
Example01

Location:
H:\ProjectM2\

Create

Close



H Drive – note large files can be created

- Thermal
- Lighting
- Solar
- Value
- Cost
- Evacuation
- Mechanical
- Electrical
- CFD

Plan Model -16.50, 3.50, 0.00

	Room Name	Room ID	Volume (m³)	Floor Area (m²)	Colour	Layer
♥						

Opening screen with default settings

To change default colour settings
Bring down 'Settings' tab

ModelIT - Untitled - Plan : Model

File Edit View Settings Draw Utilities Help

Colour 01 Layer 01

Model

No spaces

Thermal

Lighting

Solar

Value

Cost

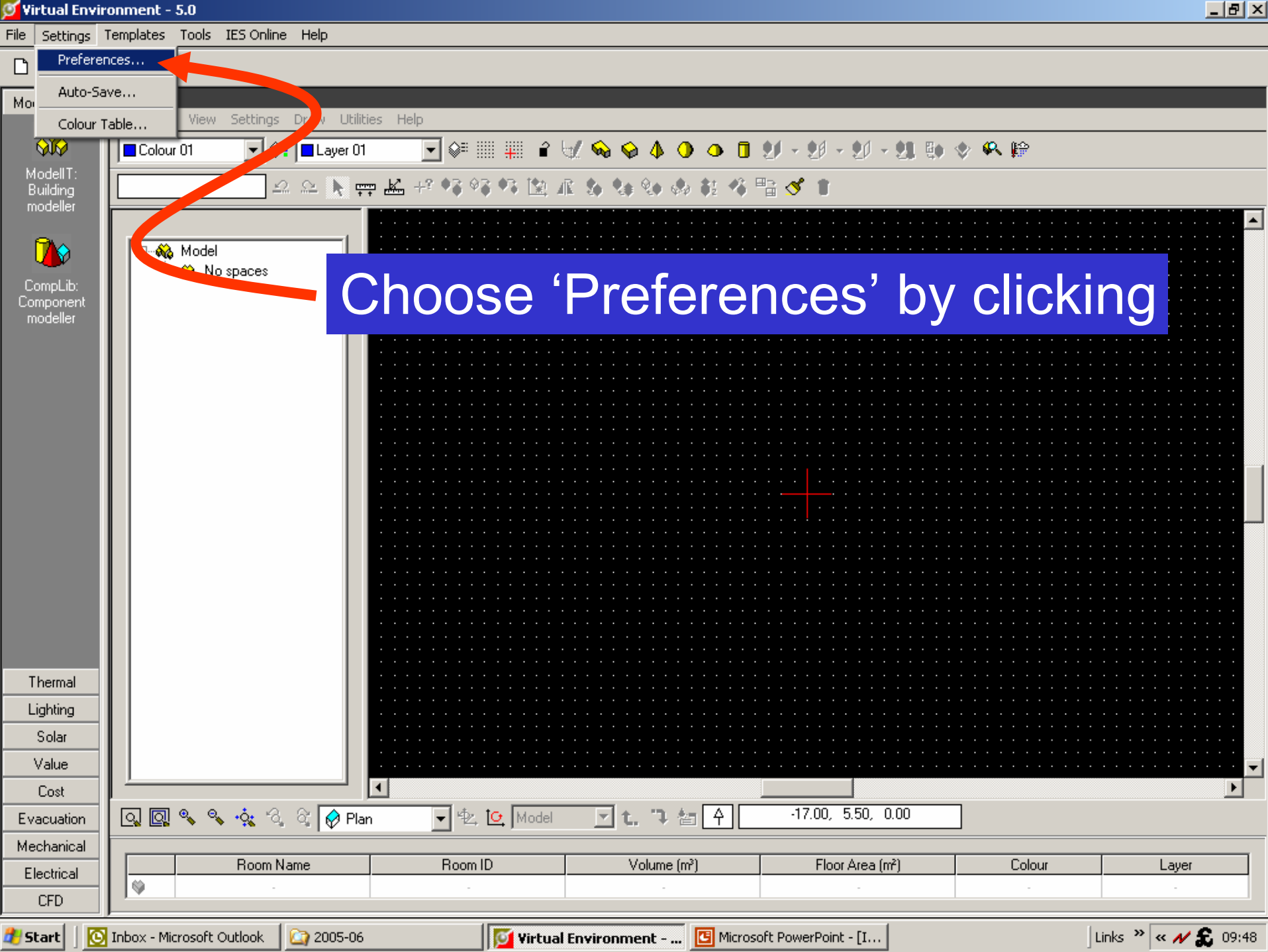
Evacuation

Mechanical

Electrical

CFD

	Room Name	Room ID	Volume (m ³)	Floor Area (m ²)	Colour	Layer
♥						



Choose 'Preferences' by clicking

	Room Name	Room ID	Volume (m³)	Floor Area (m²)	Colour	Layer
♥						



ModelBuilder



ModellT: Building modeller



CompLib: Component modeller

- Thermal
- Lighting
- Solar
- Value
- Cost
- Evacuation
- Mechanical
- Electrical
- CFD

Untitled

File Edit View Settings Draw Utilities Help

Colour 01 Layer 01

Model

- No spaces

User Preferences

Start-Up System Colours Model Viewer Settings Units

Background: Colour 57

- Background
- DXF Element
- Grid
- Highlight
- Inactive Object/Layer
- Hole
- Obstruction

OK Cancel

Plan Model -16.50, 4.00, 0.00

	Room Name	Room ID	Volume (m³)	Floor Area (m²)	Colour	Layer
♥						



ModelBuilder

Untitled

File Edit View Settings Draw Utilities Help

Colour 01 Layer 01



ModellT: Building modeller



CompLib: Component modeller

Space Settings

Reference:

Placement

Plane (m):

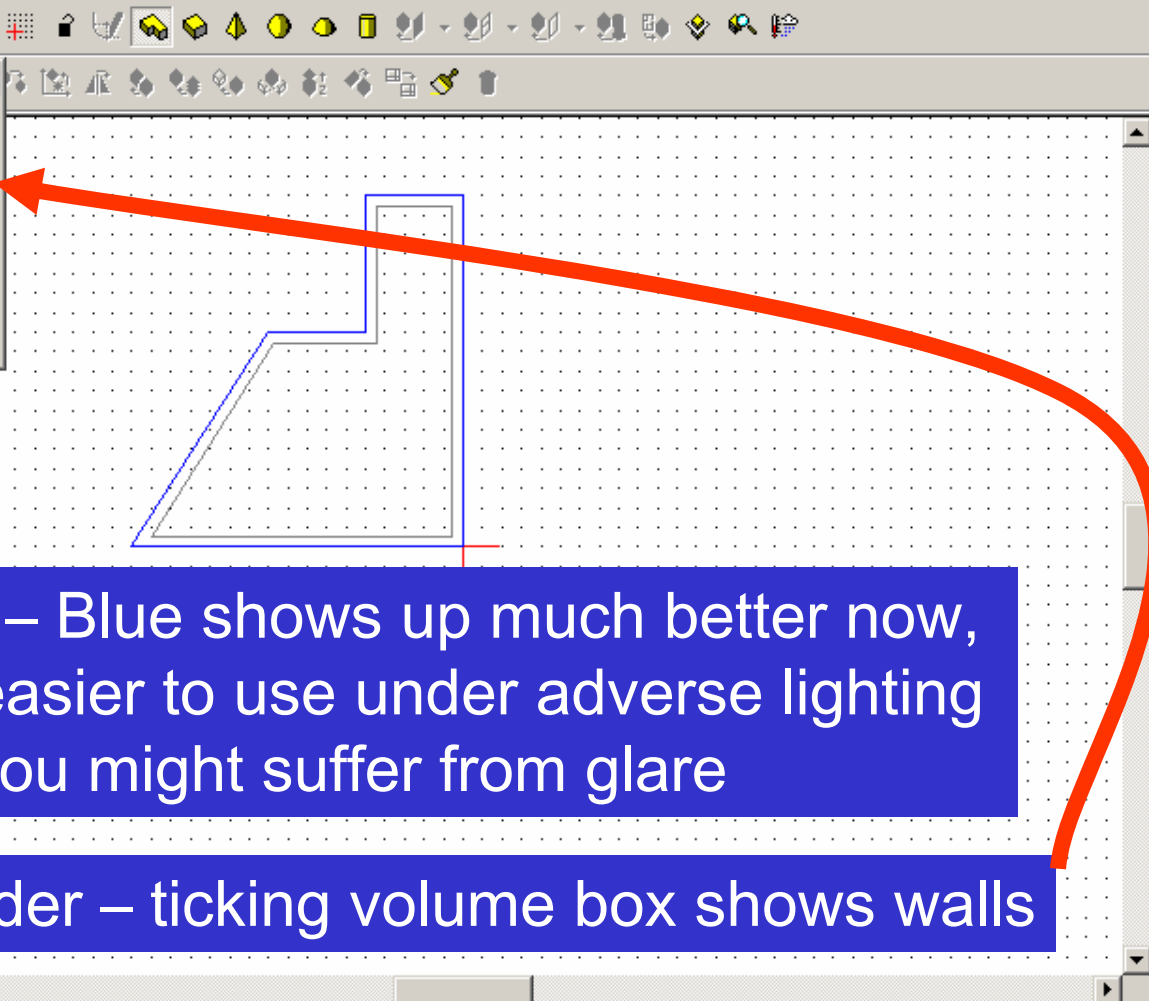
Height/depth (m):

Segments:

Create inner volume

Close Space Perimeter

Active Templates >>



Note – Blue shows up much better now,
It is easier to use under adverse lighting
But you might suffer from glare

Reminder – ticking volume box shows walls

- Thermal
- Lighting
- Solar
- Value
- Cost
- Evacuation
- Mechanical
- Electrical
- CFD

Plan Model -10.50, -6.00, 0.00

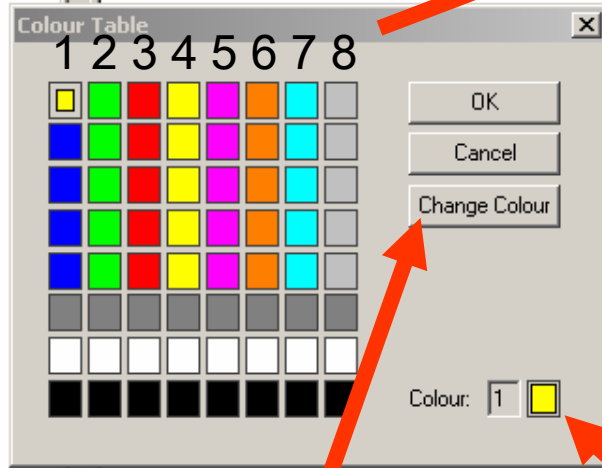
	Room Name	Room ID	Volume (m³)	Floor Area (m²)	Colour	Layer
♥						

Changing the colours available

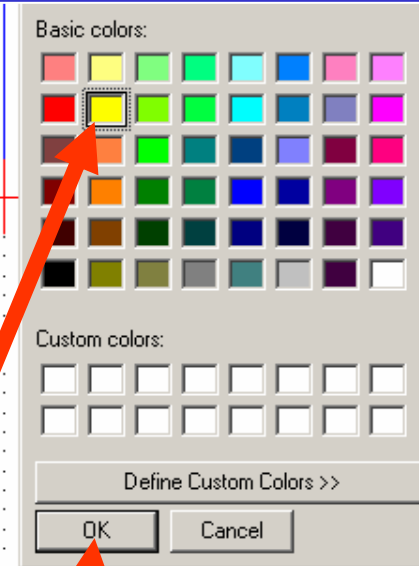
NOTE

- Colour 1 - yellow
- Colour 2 - green
- Colour 3 - red
- Colour 4 - yellow
- Colour 5 - purple
- Colour 6 - brown
- Colour 7 - light blue
- Colour 8 - grey

Click on 'Colour Table' The 'Colour Table' appears.



Either, click on 'Change Colour' or double click on colour box



Colour window appears – select colour by single clicking On colour and then OK, or double click on colour



ModelBuilder

ModellT:
Building
modellerCompLib:
Component
modeller

Thermal

Lighting

Solar

Value

Cost

Evacuation

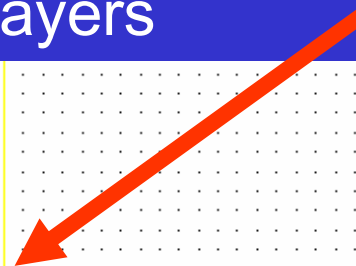
Mechanical

Electrical

CFD

Colour of object has changed to Yellow

But this is only because we have changed the colour. We have not re-specified any association of objects or layers



Colour can be allocated either by:

LAYERS

or OBJECTS

Model
+ space_01

Plan Model -17.00, 5.50, 0.00

	Room Name	Room ID	Volume (m ³)	Floor Area (m ²)	Colour	Layer



ModellT:
Building
modeller



CompLib:
Component
modeller

Colour

✓ Object Bar
Toolbars ▶

✓ Room Inner Volumes
DXF File

Viewports ▶

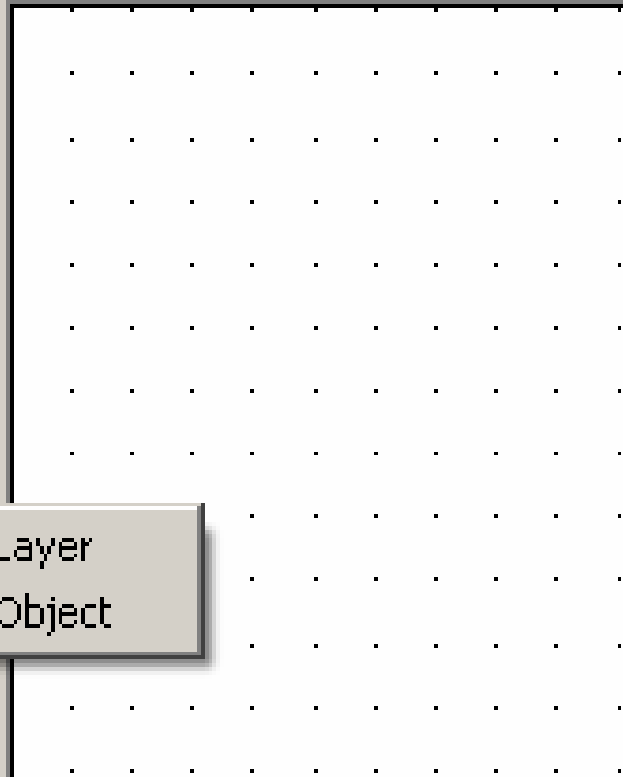
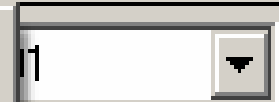
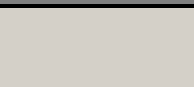
✓ Select Object

Rotation ▶

Zoom ▶

Colour ▶

✓ By Layer
By Object



To get real control over colours and layers you need to use the layer control. Either by using SETTINGS menu



ModelBuilder



ModellT:
Building
modeller

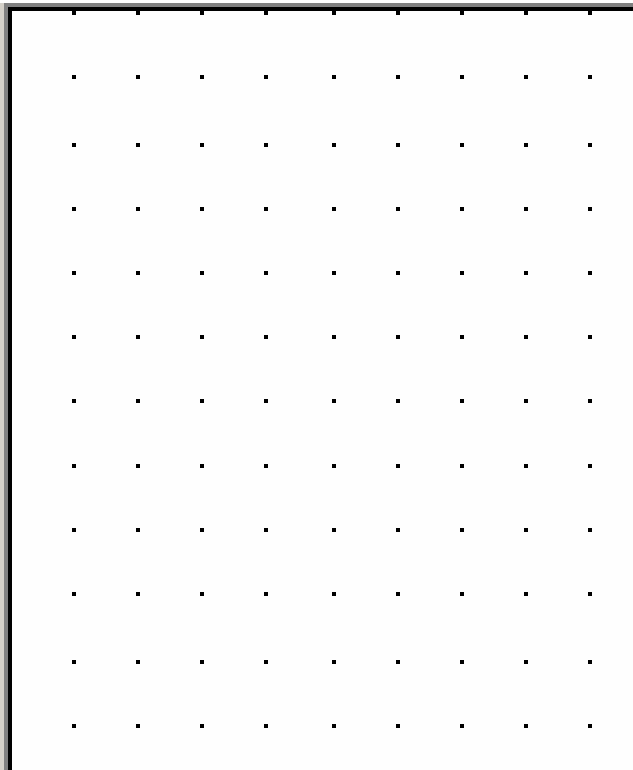
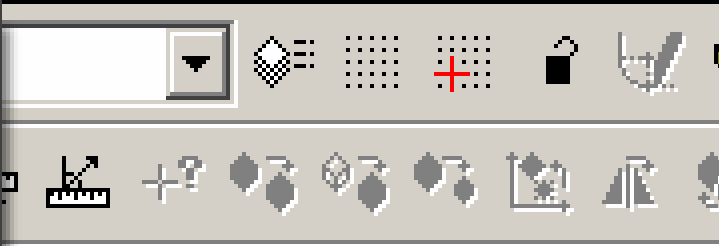


CompLib:
Component
modeller

ModellT - Untitled.mit - Plan : Model

■ Colour 01

- Layers...
- Grid...
- Locks...
- Model...
- Site Rotation...





Or by clicking on the layer TOOLBAR

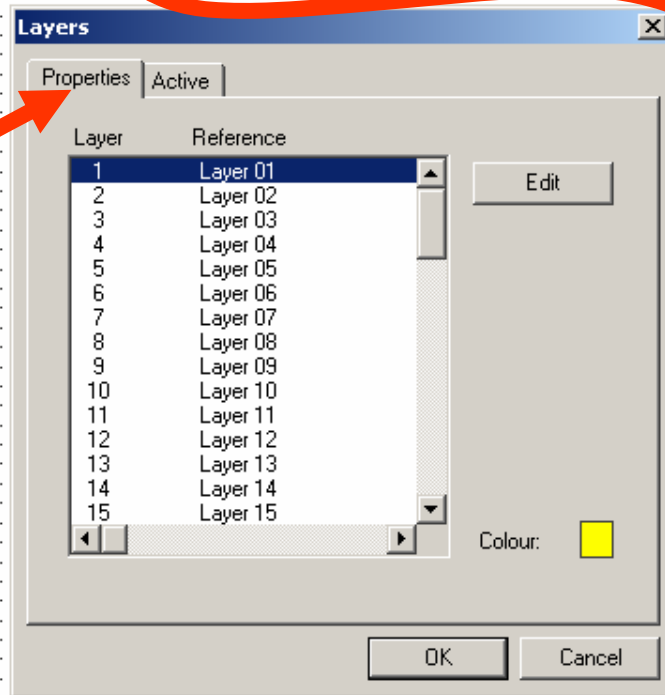
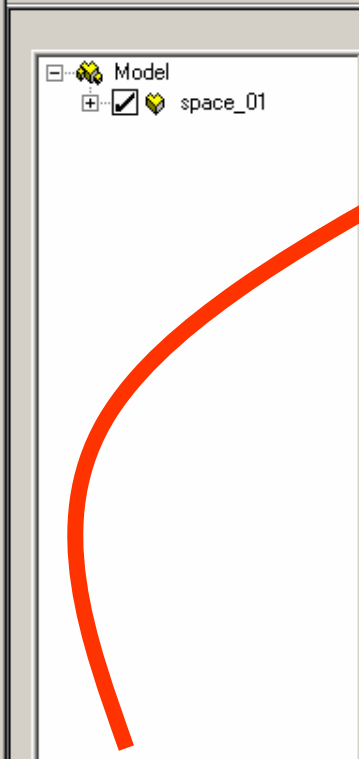
ModelBuilder

ModellT:
Building
modellerCompLib:
Component
modeller

Untitled

File Edit View Settings Draw Utilities Help

Colour 01 Layer 01



Click on the 'Layers' button and the 'Layers' window appears

The 'Properties' tab allows you to change the colour of the layer

Click on Edit or double click on the colour box

NOTE

- Colour 1 - yellow
- Colour 2 - green
- Colour 3 - red
- Colour 4 - yellow
- Colour 5 - purple
- Colour 6 - brown
- Colour 7 - light blue
- Colour 8 - grey



Layers

Properties Active

Layer	Reference
1	Layer 01
2	Layer 02
3	Layer 03
4	Layer 04
5	Layer 05
6	Layer 06
7	Layer 07
8	Layer 08
9	Layer 09

Edit

Highlight a layer by clicking on it

Click on Edit and the edit window appears

Edit Layer

Layer 04

Colour 01

Colour 02

Colour 03

Colour 04

Colour 05

Colour 06

Colour 07

OK

Cancel

Colour: [Yellow]

OK

Cancel

Click on arrow and select colour from drop down table

Then click, OK and OK

Thermal

Li

Evacuation

Mechanical

Electrical

CFD

Room Name	Room ID	Volume (m³)	Floor Area (m²)	Colour	Layer



ModelBuilder

ModellT:
Building
modellerCompLib:
Component
modeller

Untitled

File Edit View Settings Draw Utilities Help

Colour 01 Layer 01


 Model
 space_01

Layers

Properties Active

Layer Reference

1	Layer 01
2	Layer 02
3	Layer 03
4	Layer 04
5	Layer 05
6	Layer 06
7	Layer 07
8	Layer 08
9	Layer 09
10	Layer 10
11	Layer 11
12	Layer 12
13	Layer 13
14	Layer 14
15	Layer 15

Edit

Colour:



OK

Cancel

Changing layer 4 to Brown

Plan Model -17.00, 2.50, 0.00

	Room Name	Room ID	Volume (m³)	Floor Area (m²)	Colour	Layer



ModelBuilder

ModellT:
Building
modellerCompLib:
Component
modeller

Untitled

File Edit View Settings Draw Utilities Help

Colour 01

Layer 01

Layer 01

Layer 02

Layer 03

Layer 04

Layer 05

Layer 06

Model

space_01



Drop down list on Layers now shows
The layer 4 as being colour Brown

Thermal

Lighting

Solar

Value

Cost

Evacuation

Mechanical

Electrical

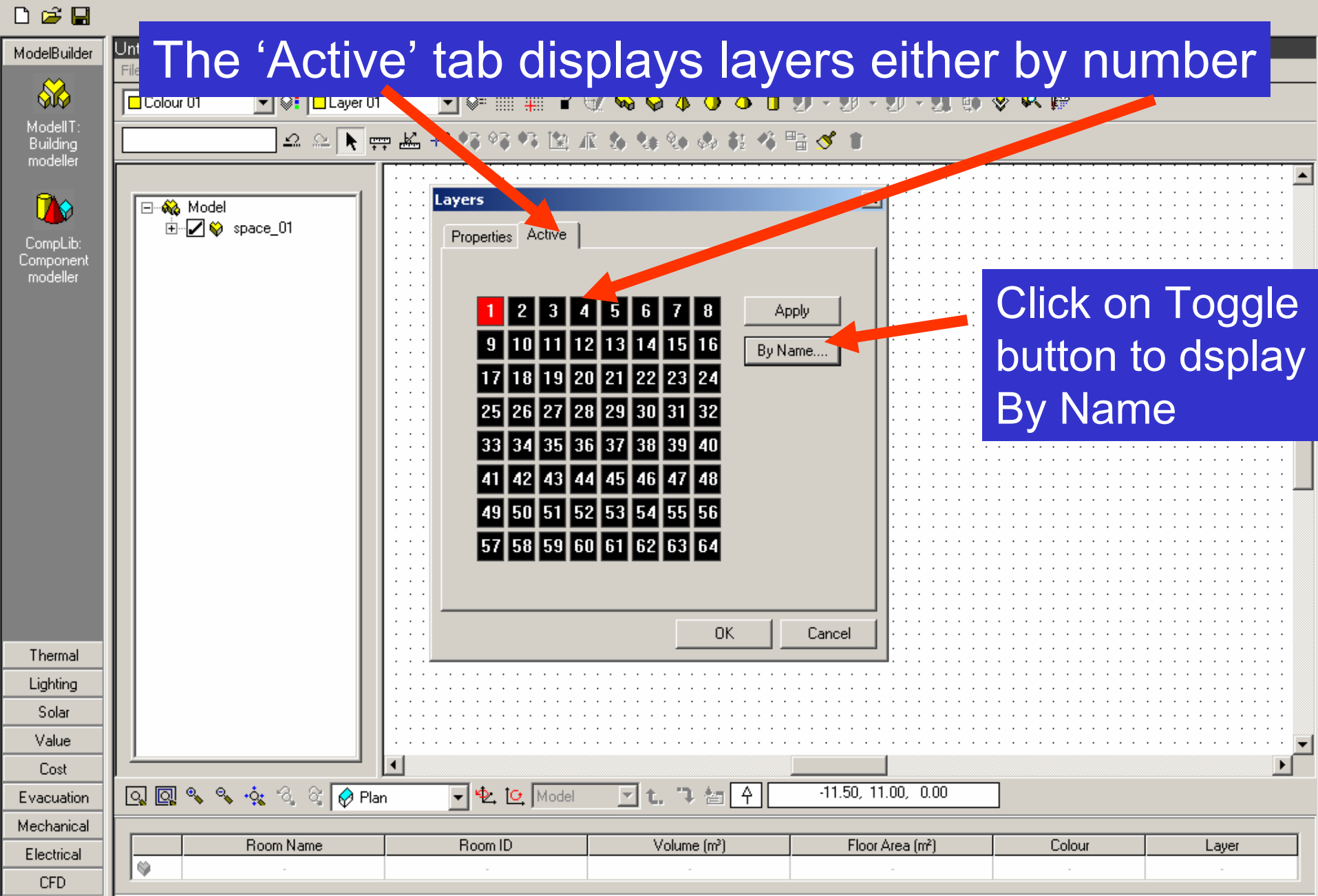
CFD



Plan Model -16.00, 11.00, 0.00

	Room Name	Room ID	Volume (m³)	Floor Area (m²)	Colour	Layer

The 'Active' tab displays layers either by number



Click on Toggle button to display By Name

- Thermal
- Lighting
- Solar
- Value
- Cost
- Evacuation
- Mechanical
- Electrical
- CFD

	Room Name	Room ID	Volume (m³)	Floor Area (m²)	Colour	Layer
♥						



ModelBuilder



ModellT: Building modeller



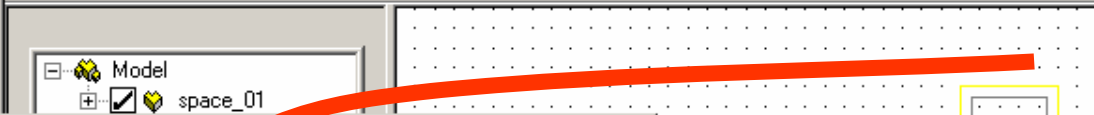
Complib: Component modeller

- Thermal
- Lighting
- Solar
- Value
- Cost
- Evacuation
- Mechanical
- Electrical
- CFD

Untitled

File Edit View Settings Draw Util

Colour 01 Layer 0



Layers

Properties Active

1	2	3	4	5	6	7	8
9	10	11	12	13	14	15	16
17	18	19	20	21	22	23	24
25	26	27	28	29	30	31	32
33	34	35	36	37	38	39	40
41	42	43	44	45	46	47	48
49	50	51	52	53	54	55	56
57	58	59	60	61	62	63	64

Apply

By Name...

OK

A Layer may be in one of 3 states

'ACTIVE'
 the active layer is shown in a **RED** box, this is the layer on which you draw. You make a Layer active by Double clicking on it

Layers in a Clear box and Black box are **INACTIVE**, the difference between them is that the layers in a clear box are shown as inactive by objects being **GREY**, the objects on layers in a black box are shown in the Layer colour. Toggle between the two by Single clicking



ModelBuilder



ModellT: Building modeller



Complib: Component modeller

- Thermal
- Lighting
- Solar
- Value
- Cost
- Evacuation
- Mechanical
- Electrical
- CFD

Untitled

File Edit View Settings Draw Utilities Help

Colour 01 Layer 01

Layers

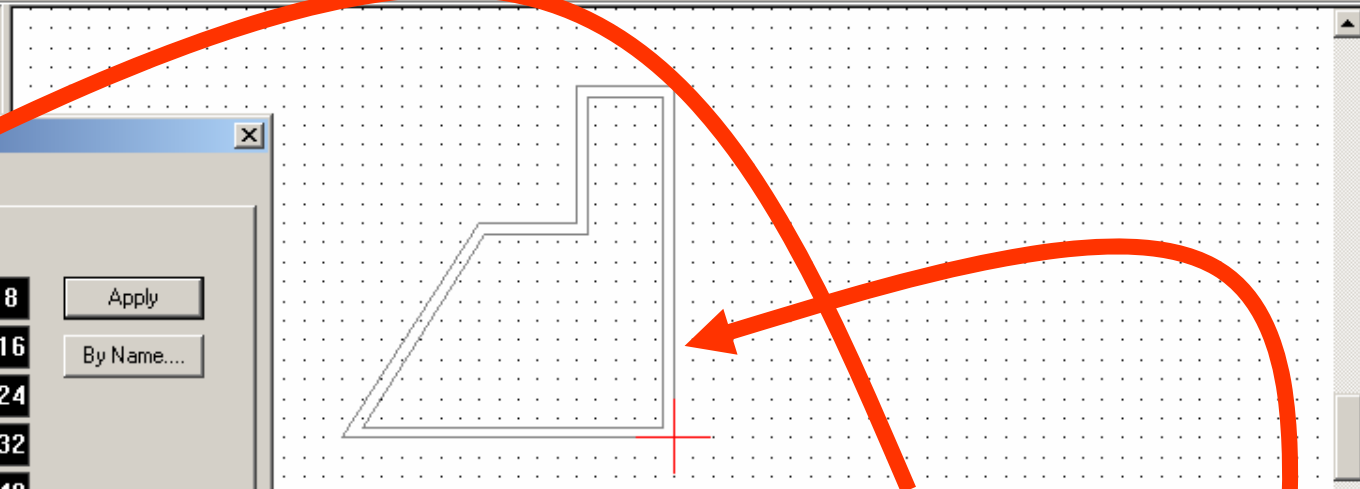
Properties Active

1	2	3	4	5	6	7	8
9	10	11	12	13	14	15	16
17	18	19	20	21	22	23	24
25	26	27	28	29	30	31	32
33	34	35	36	37	38	39	40
41	42	43	44	45	46	47	48
49	50	51	52	53	54	55	56
57	58	59	60	61	62	63	64

Apply

By Name...

OK Cancel



Layer 1 has been toggled to be inactive and clear, and so the object in layer one has gone to a grey Colour.

Plan Model -14.50, 11.00, 0.00

	Room Name	Room ID	Volume (m³)	Floor Area (m²)	Colour	Layer
♥						



ModelBuilder



ModellT: Building modeller



ComLib: Component modeller

- Thermal
- Lighting
- Solar
- Value
- Cost
- Evacuation
- Mechanical
- Electrical
- CFD

Untitled

File Edit View

Colour 01

Active tab showing layers by name

Layers

Properties Active

1	ON	Layer 01
2	ON	Layer 02
3	ON	Layer 03
4	ON	Layer 04
5	ON	Layer 05
6	ON	Layer 06
7	ON	Layer 07
8	ON	Layer 08
9	ON	Layer 09
10	ON	Layer 10
11	ON	Layer 11
12	ON	Layer 12
13	ON	Layer 13
14	ON	Layer 14
15	ON	Layer 15

Apply

By Number...

On Off

OK

Cancel

Highlight a layer

Select 'OFF'

Click on Apply

You don't seem to be able to de-activate if the layer is Active, only to change the way the layer is depicted on the screen



ModelBuilder

ModellT:
Building
modellerCompLib:
Component
modeller

Untitled

File Edit View Settings Draw Utilities Help

Colour 01

Layer 02

Space Settings

Reference: space_01

Placement

Plane (m): 4

Create inner volume

Height/depth (m): 2

Close Space Perimeter

Segments: 10

Active Templates >>

Locks

- Grid
- Axis
- Endpoint
- Midpoint
- Perpendicular

Thermal

Lighting

Solar

Value

Cost

Evacuation

Mechanical

Electrical

CFD

Plan Model -7.00, -3.00, 4.00

	Room Name	Room ID	Volume (m ³)	Floor Area (m ²)	Colour	Layer

I Activated layer 2 by double clicking on the Number box 2, so as to make it RED.

You can also activate a layer by choosing From the drop down list

I have drawn a space on layer 2 which is above the space on Level 1



ModelBuilder

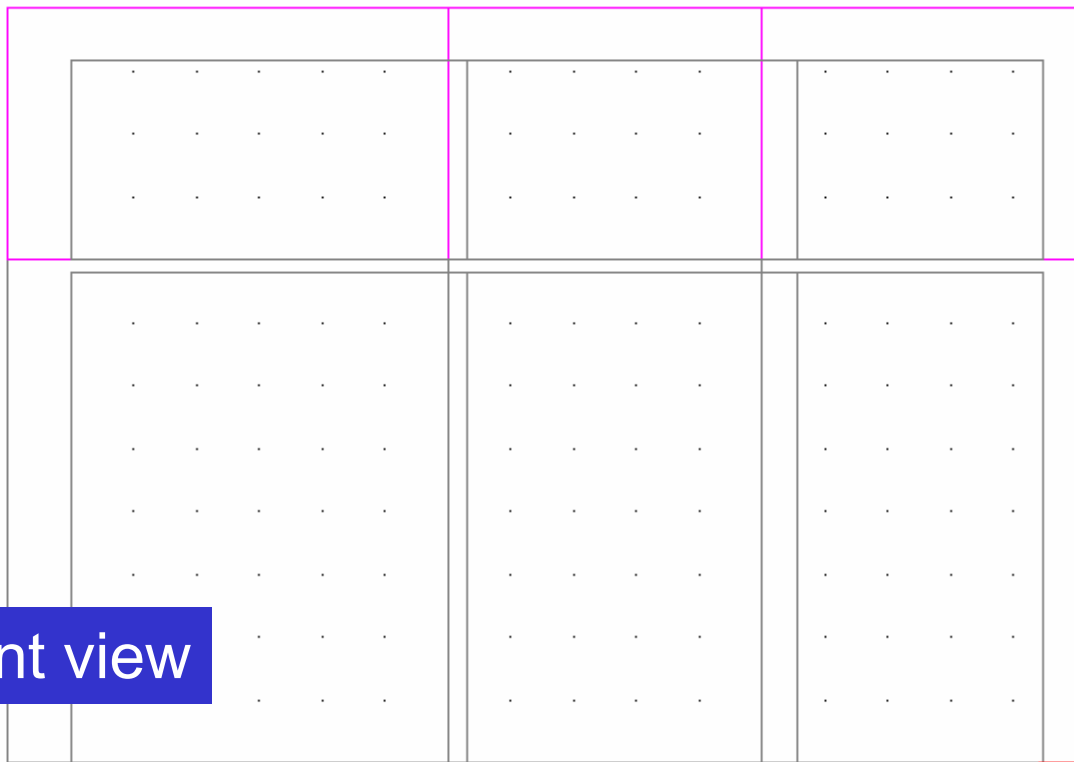
ModellT:
Building
modellerCompLib:
Component
modeller

ModellT - Untitled - Front : Model

File Edit View Settings Draw Utilities Help



- [-] Model
 - [+] space_01
 - [+] space_01



This is a Front view

Thermal

Lighting

Solar

Value

Cost

Evacuation

Mechanical

Electrical

CFD



	Room Name	Room ID	Volume (m ³)	Floor Area (m ²)	Colour	Layer
	-	-	-	-	-	-



ModelBuilder

ModellT:
Building
modeller

ComplLib:
Component
modeller

ModellT - Untitled - Front : Model

File Edit View Settings Draw Utilities Help

Colour

- Object Bar
- Toolbars
- Room Inner Volumes
- DXF File
- Viewports
- Select Object
- Rotation
- Zoom
- Colour



Uncheck 'Room inner volumes'



- Thermal
- Lighting
- Solar
- Value
- Cost
- Evacuation
- Mechanical
- Electrical
- CFD

Front Model -9.50, 4.00, 6.00

	Room Name	Room ID	Volume (m³)	Floor Area (m²)	Colour	Layer
☺						



ModelBuilder


 ModellT:
Building
modeller

 CompLib:
Component
modeller

ModellT - Untitled - Front : Model

File Edit View Settings Draw Utilities Help



- Model
- space_01
- space_01

Outside surfaces only now shown



	Room Name	Room ID	Volume (m ³)	Floor Area (m ²)	Colour	Layer
	-	-	-	-	-	-

CFD

Single click on level 1 box to show spaces in level 1



ModelBuilder



ModellT: Building modeller



CompLib: Component modeller

- Thermal
- Lighting
- Solar
- Value
- Cost
- Evacuation
- Mechanical
- Electrical
- CFD

ModellT: Building modeller

Colour 01 Layer 02

Model

- space_01
- space_01

Layers

Properties Active

1	2	3	4	5	6	7	8
9	10	11	12	13	14	15	16
17	18	19	20	21	22	23	24
25	26	27	28	29	30	31	32
33	34	35	36	37	38	39	40
41	42	43	44	45	46	47	48
49	50	51	52	53	54	55	56
57	58	59	60	61	62	63	64

Apply

By Name...

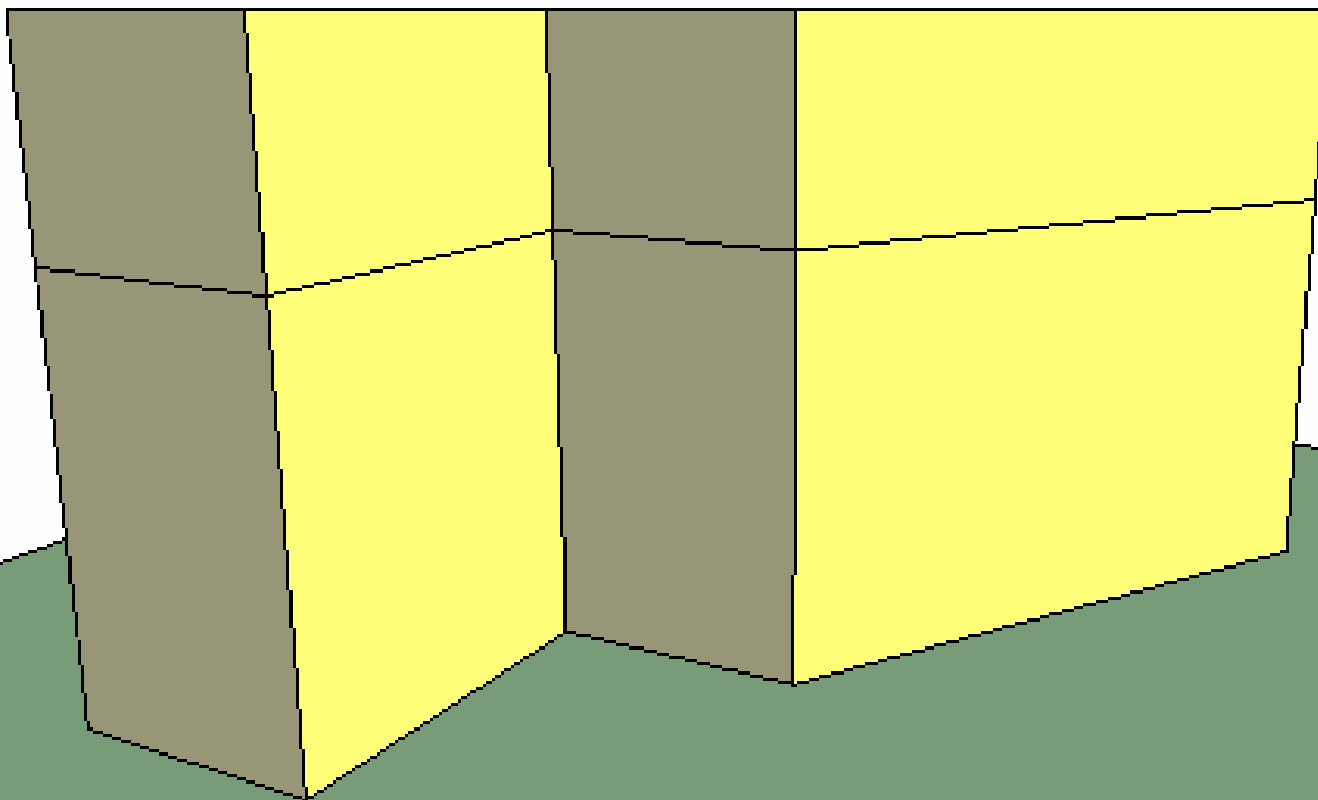
OK Cancel

Front Model -8.50, 4.00, 6.50

	Room Name	Room ID	Volume (m³)	Floor Area (m²)	Colour	Layer
♥						



Two spaces, one above the other





ModelBuilder



ModelT:
Building
modeller



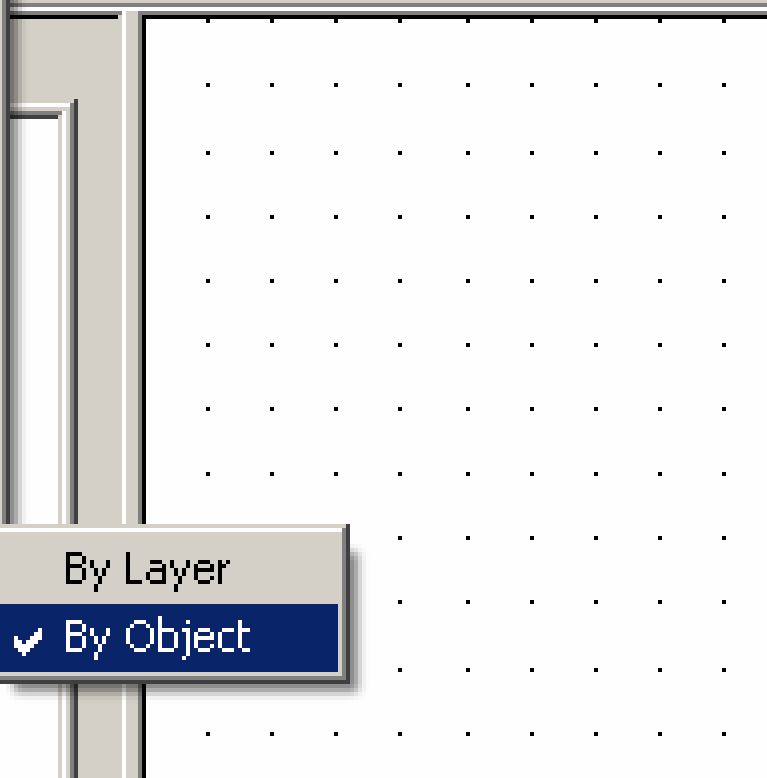
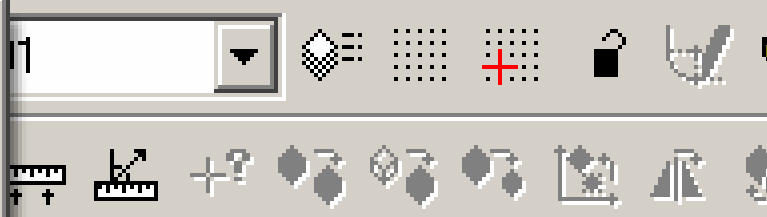
CompLib:
Component
modeller

ModellT - Untitled.mit - Plan : Model

Colour

- Object Bar
- Toolbars ▶
- Room Inner Volumes
- DXF File
- Viewports ▶
- Select Object
- Rotation ▶
- Zoom ▶
- Colour ▶**

- By Layer
- By Object**





ModelBuilder



ModelIT:
Building
modeller



CompLib:
Component
modeller

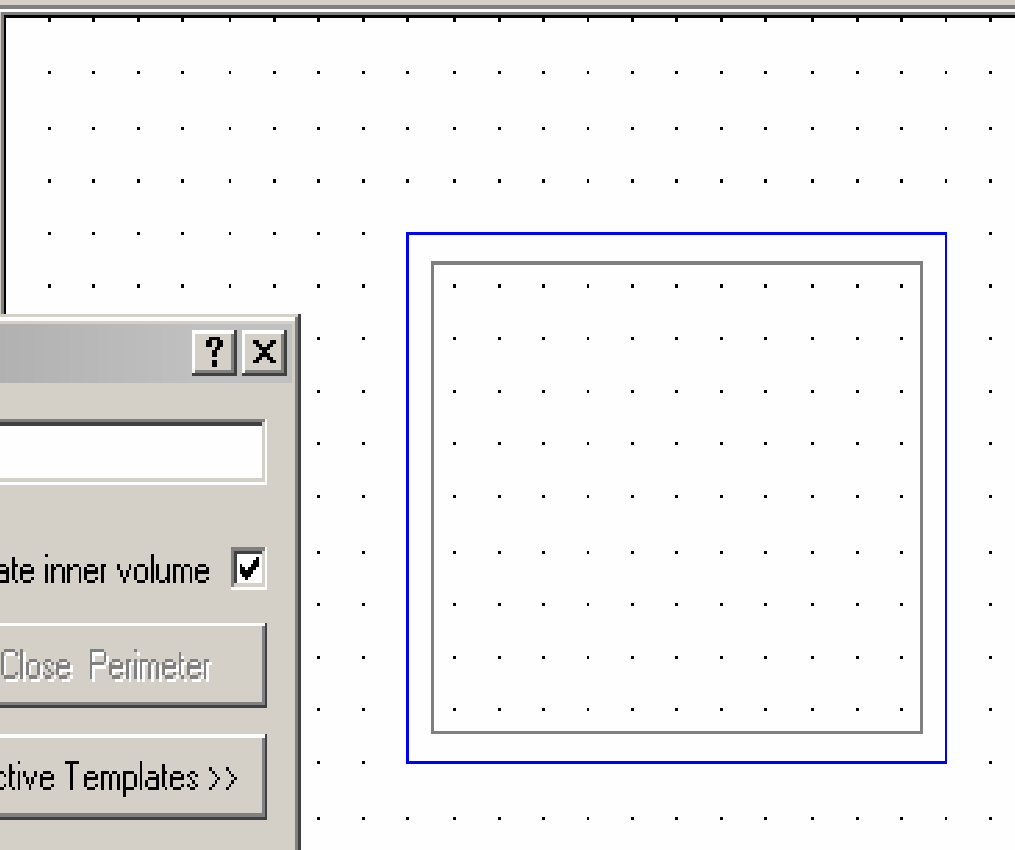
ModelIT - Untitled.mit - Plan : Model

File Edit View Settings Draw Utilities Help

Colour selection dropdown menu:

- Colour 01
- Colour 02**
- Colour 03
- Colour 04
- Colour 05
- Colour 06

Layer 01



Space Settings

Reference:

Placement

Plane (m):

Height/depth (m):

Segments:

Create inner volume

Close Perimeter

Active Templates >>

ModellIT - Untitled.mit - Plan : Model

File Edit View Settings Draw Utilities Help

Colour 03 Layer 01

Model

- new_space_03
- new_space_03
- new_space_03

Space Settings [?] [X]

Reference: new_space_03

Placement

Plane (m): 0.00

Height/depth (m): -5.00

Segments: 10

Create inner volume

Close Perimeter

Active Templates >>

