

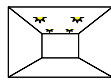
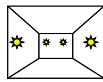
LUMINAIRES

FUNCTIONS OF THE LUMINAIRE

- 1 House Lamps and control gear
- 2 Protect against
 - mechanical damage
 - moisture
 - dirt
 - inflammable gases
 - electrical interference
- 3 Provide a suitable Appearance
- 4 Distribute the light
 - General description
 - Flux fraction ratio
 - BZ, British Zonal Classification
 - CIE classification

LOCATION of LUMINAIRES

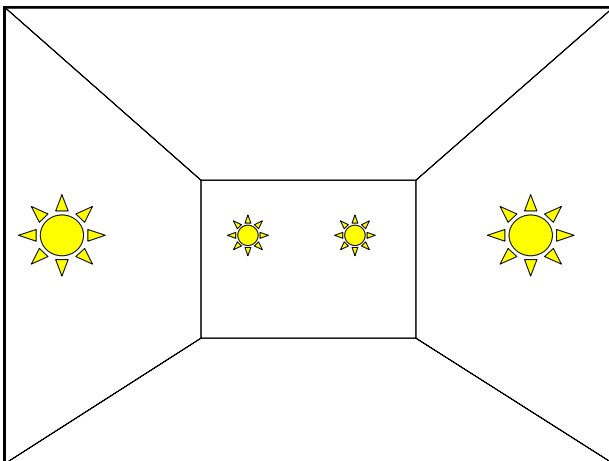
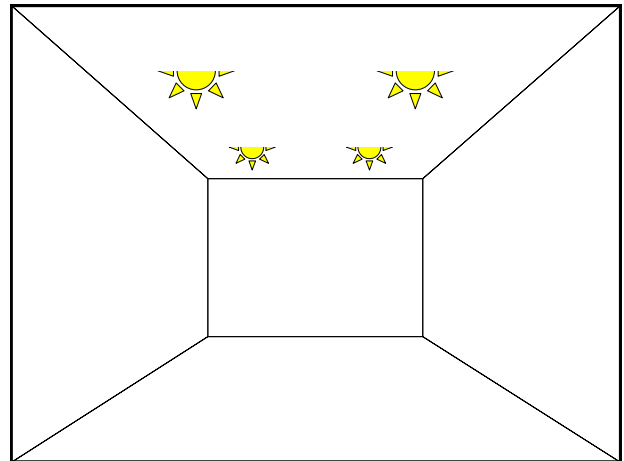
Wall
Ceiling
Floor



Pendent
Surface
Semi-recessed
Recessed



Standard
Desk

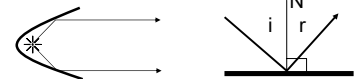


CONTROL of LIGHT DISTRIBUTION

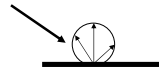
Obscuration



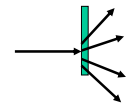
Specular reflection



Diffuse reflection



Diffuse transmission



Refraction

